

Color Management settings:

before creating PDFs you have to set up your applications colour management correctly. First you have to import the newest profiles for ISO 12647-2 recommended by FOGRA (www.fogra.de, www.eci.org).

Profiles for ISO 12647-2:2007:

RGB: eciRGB_v2.icc

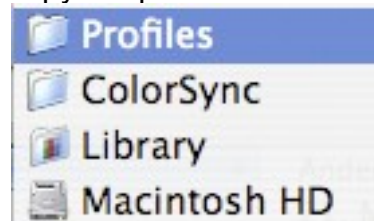
CYMK: ISOcoated_v2_ECI.icc

to be found in folder "Support Files\Colour Calibration\Profiles"

Copy this two profiles into the appropriate folder shown below for Mac or PC

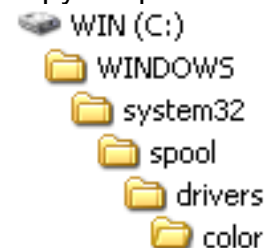
Mac:

copy the profiles to "Macintosh HD:Library:ColorSync:Profiles"



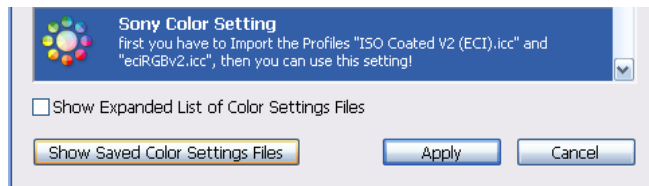
PC:

copy the profiles to "C:\Windows\System32\spool\drivers\color"



There are several ways how to set up these profiles in your Adobe graphic programs. It's important that every Adobe graphic program uses the same profiles!

- 1.) use the software Adobe Bridge (comes with Creative Suite or Design Suite) to sync the settings over the whole Suite
 - 1.) choose "Edit" -> "Creative Suite Color Settings ..."
 - 2.) press the button "Show Saved Color Settings Files" -> a folder new folder will appear
 - 3.) copy our preset "Sony Color Setting.csf" ("Support Files\Colour Calibration") into this folder
 - 4.) choose the profile "Sony Color Settings" in "Suites Color Settings"

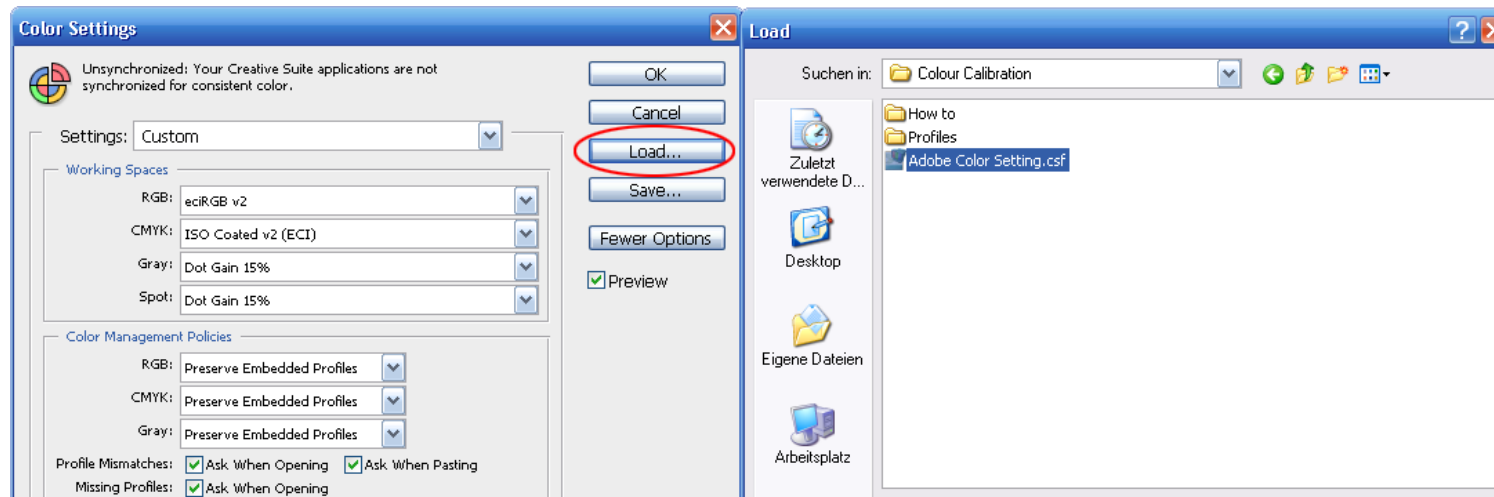


- 5.) if there's no error you now have same colour settings through all your Adobe programs

- 2.) load our preset into each program

our preset "Sony Color Setting.csf" is located in folder "Support Files\Colour Calibration"

Open every program and go to the color settings (Edit -> Color Settings (PH, ILL, IND) – not supported in Adobe Acrobat Professional -> see 3.) -> manually choose profiles). In color settings press the button "Load ..." to load our preset.



- 3.) manually choose the icc profiles
open colour management settings for each program (Edit -> "Color Settings" (PH, ILL, IND) or Preferences -> "Color Management" in Adobe Acrobat Professional) and manually choose the profiles (like shown in screenshot below).
Important: Button "More Options" has be selected (otherwise you won't find the profiles in the list)

